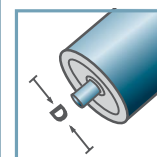
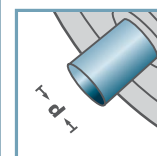


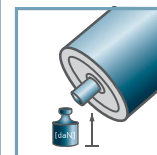
KTR-16.00  
KTR-16.01



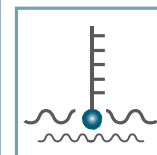
D [mm]  
16



d [mm]  
5; 6



C [daN]  
3



T [°C]  
0° - 80°



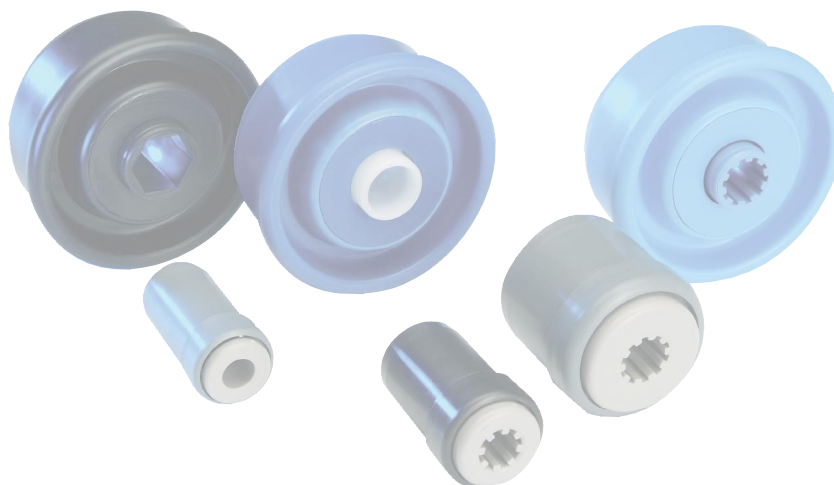
Envase [pzs.]

500/2500

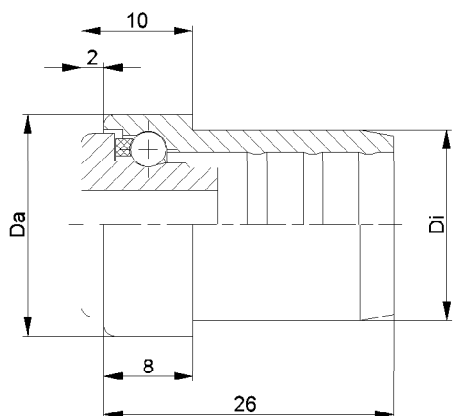
KTR-16.00/01					
Tipo	Normal .00	Inox .01	Di +0,15	Da	carga máxima C [daN]
KTR-16x1,0	x	x	14,1	15,9	3

Otras medidas a consultar!

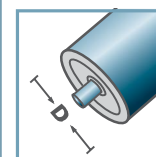
- ☛ Cazoleta: Plástico
- ☛ Buje: Plástico
- ☛ Bolas
  - ☛ 00: Acero
  - ☛ 01: INOX 1.4034



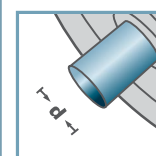
KTR



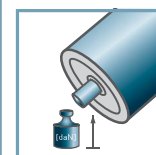
KTR-20.00  
KTR-20.01



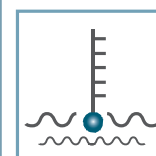
D [mm]  
20



d [mm]  
6; 8



C [daN]  
5



T [°C]  
0° - 80°



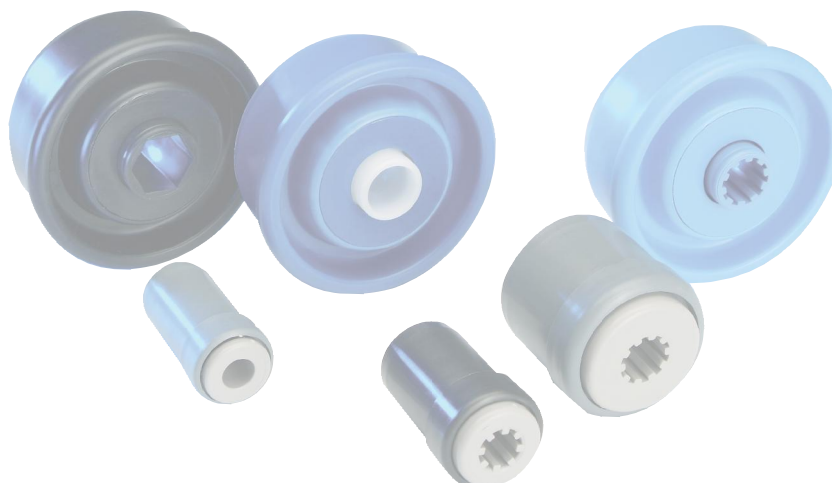
Envase [pzs.]

500/1000

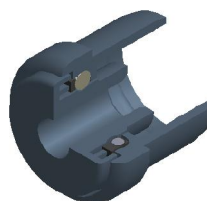
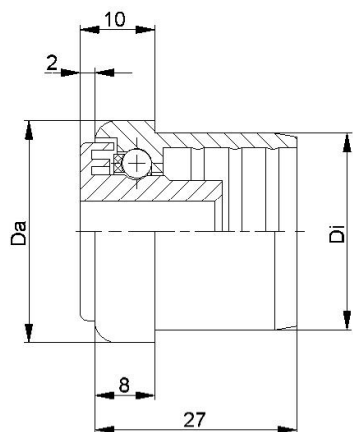
KTR-20.00/.01					
Tipo	Normal .00	Inox .01	Di +0,15	Da	carga máxima C [daN]
KTR-20x1,0	x	x	18,1	19,9	5
KTR-20x1,5	x	x	17,1	19,9	5

Otras medidas a consultar!

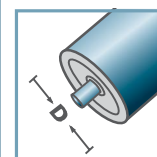
- ☛ Cazoleta: Plástico
- ☛ Buje: Plástico
- ☛ Jaula: Plástico
- ☛ Bolas
  - ☛ 00: Acero
  - ☛ 01: INOX 1.4034



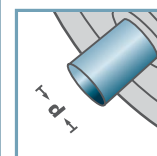
KTR



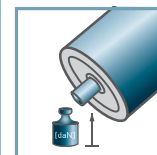
KTR-30.00  
KTR-30.01



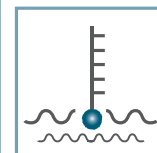
D [mm]  
30



d [mm]  
6; 8; 10



C [daN]  
7



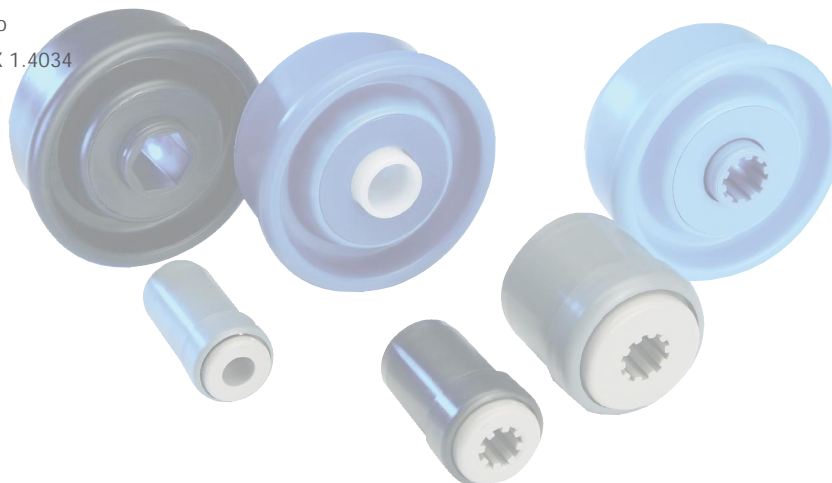
T [°C]  
0° - 80°



KTR-30.00/.01					
Tipo	Normal .00	Inox .01	Di +0,25	Da	carga máxima C [daN]
KTR-30x1,0	x	x	28,1	29,9	7
KTR-30x1,5	x	x	27,1	29,9	7
KTR-30x1,8	x	x	26,5	29,9	7
KTR-30x2,0	x	x	26,35	29,9	7

Otras medidas a consultar!

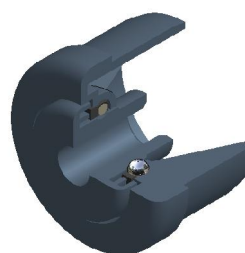
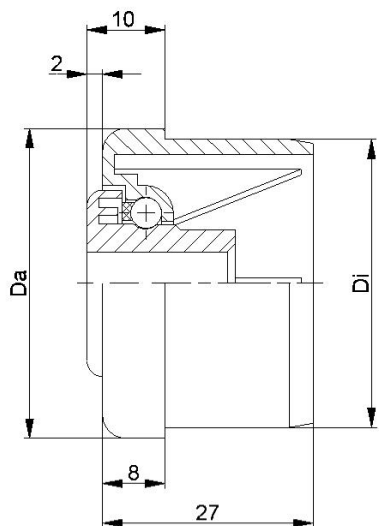
- ☛ Cazoleta: Plástico
- ☛ Buje: Plástico
- ☛ Jaula: Plástico
- ☛ Bolas
  - ☛ 00: Acero
  - ☛ 01: INOX 1.4034



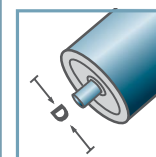
Envase [pzs.]

250/500

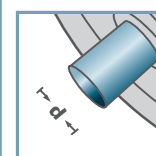
KTR



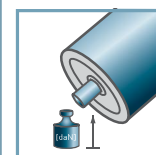
KTR-40.00  
KTR-40.01



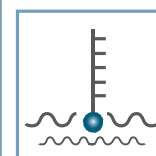
D [mm]  
40



d [mm]  
6; 8; 10



C [daN]  
7



T [°C]  
0° - 80°



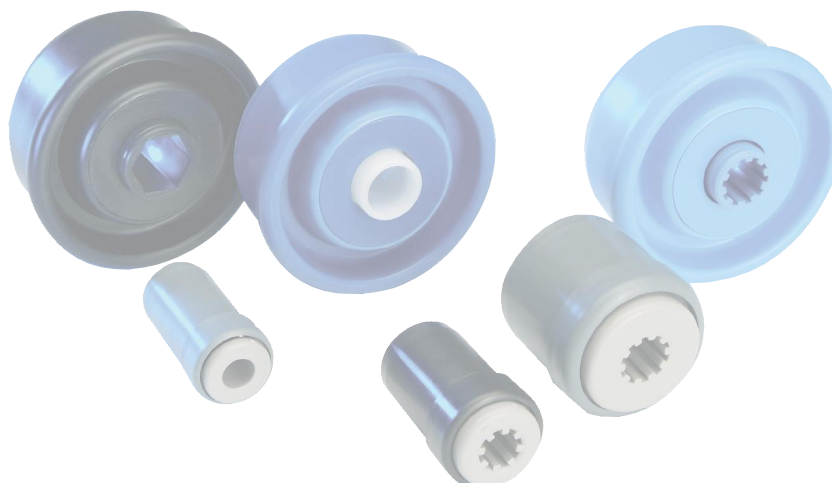
Envase [pzs.]

250

KTR-40.00/.01					
Tipo	Normal .00	Inox .01	Di +0,25	Da	carga máxima C [daN]
KTR-40x1,5	x	x	37,1	39,9	7
KTR-40x2,3	x	x	35,5	39,9	7

Otras medidas a consultar!

- ☛ Cazoleta: Plástico
- ☛ Buje: Plástico
- ☛ Jaula: Plástico
- ☛ Bolas
  - ☛ 00: Acero
  - ☛ 01: INOX 1.4034



KTR