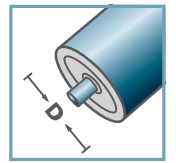
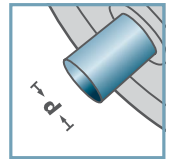


LH-6204



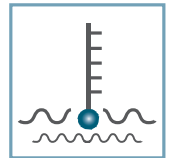
D [mm]
63,5 - 133



d [mm]
20



C [daN]
-



T [°C]
-

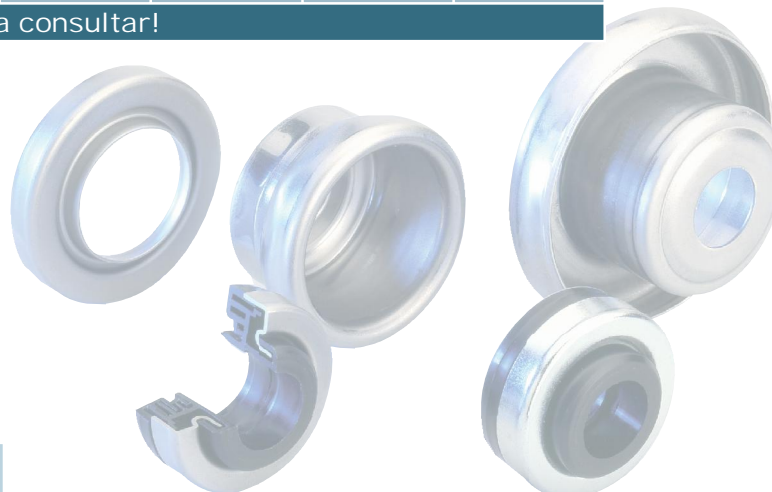


6204:
D47, d20, H14

LH-6204				
Tipo	Di	H	dL	t
LH-63,5x1,75/6204	60,5	33	26	1,5
LH-63,5x2,9/6204	58,2	33	26	1,5
LH-80x2,0/6204	76,5	36,5	26	2,0
LH-80x3,0/6204	74,5	36,5	26	2,0
LH-89x3,0/6204	83,5	36,5	26	2,0
LH-108x2,5/6204	103,3	36,5	26	2,0
LH-108x2,9/6204	102,8	36,5	26	2,0
LH-108x3,25/6204	102,1	36,5	26	2,0
LH-133x3,6/6204	126,3	36,5	26	2,5

Otras medidas a consultar!

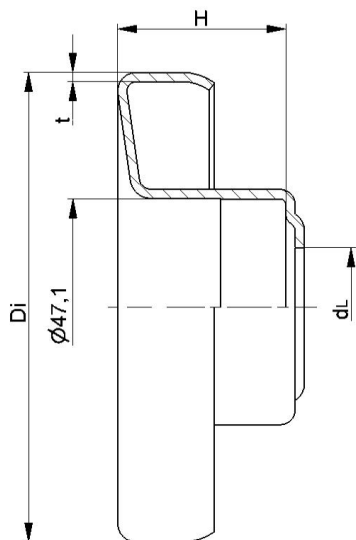
☛ Cazoleta: Acero



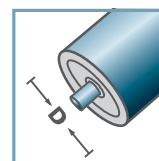
cestón [pzs.]

ø63,5: 6000
ø80: 3500
ø89: 3100
ø108: 2000
ø133: 1150

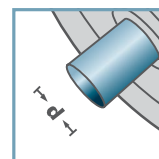
LH/FL



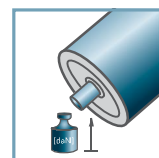
LH-6204 N



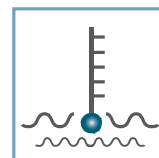
D [mm]
63,5 - 108



d [mm]
20



C [daN]
-



T [°C]
-



6204:
D47, d20, H14



cestón [pzs.]

ø63,5: 6000
ø89: 3100/3350
ø108: 2000

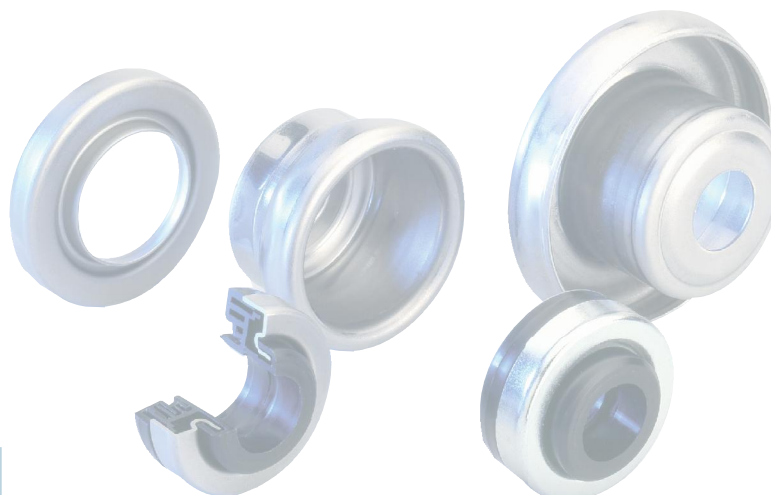
LH-6204 N

Tipo	Di	H	dL	t
LH-63,5x1,75/6204N	60,5	31,8	21	1,5
LH-89x3,0/6204N *	83,7	33,5	21	1,5
LH-108x3,25/6204N	102,1	36,5	21	2,0

Otras medidas a consultar!

☛ Cazoleta: Acero

☛ *Alternativo: Inox



LH/FL